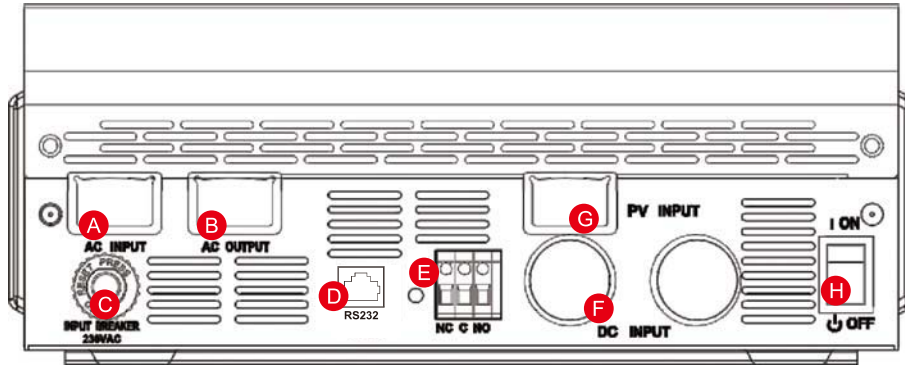
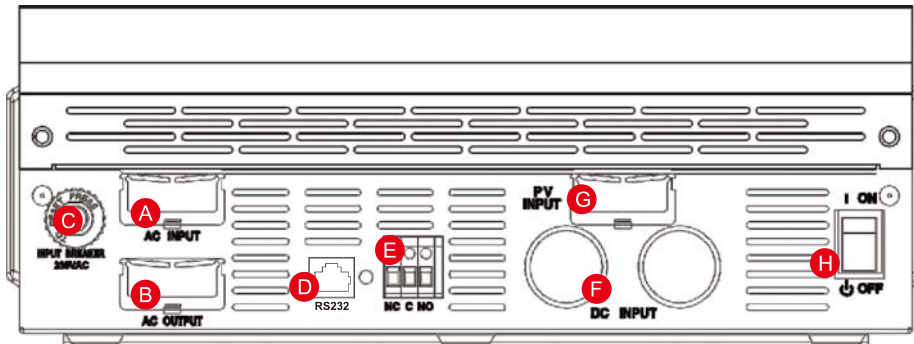


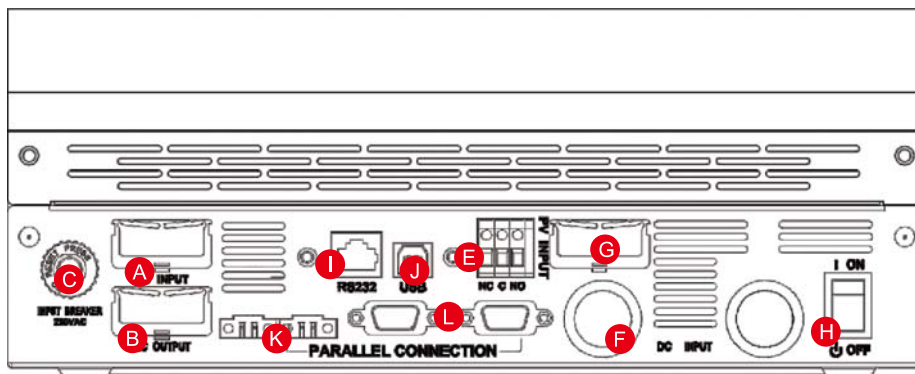
Function Description:



USPP3119C 1KVA



USPP3119C 2-3KVA

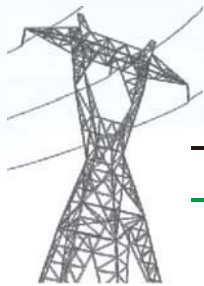


USPP3119C 4-5KVA

- | | | |
|-----------------------------------|------------------------------|---|
| A AC input | E Dry contact | I RS232 COMMUNICATION PORT |
| B AC output | F DC Output | J USB communication port(optional)
Current sharing cable
(only for parallel model) |
| C Circuit breaker | G PV input | K Parallel communication cable
(only for parallel model) |
| D RS232 COMMUNICATION PORT | H Power on/off switch | L Parallel communication cable
(only for parallel model) |



Parallel operation with up to 6 units only available for 4KVA/5KVA



Built-in Pwm

Wall Mounted



USPP3119C1**Wall Mounted Integrated Solar Power Inverter technical specification****Built-in PWM Solar controller**

MODEL	USPP3119C1	
Rated Power	1000VA/800W	
INPUT		
Voltage	230 VAC	
Selectable Voltage Range	170-280 VAC (For Personal Computers) 90-280 VAC (For Home Appliances)	
Frequency Range	50 Hz/60 Hz (Auto sensing)	
OUTPUT		
AC Voltage Regulation (Batt. Mode)	230VAC \pm 5%	
Surge Power	2000VA	
Efficiency (Peak)	90%	
Transfer Time	10 ms (For Personal Computers) 20 ms (For Home Appliances)	
Waveform	Pure sine wave	
BATTERY		
Battery Voltage		12 VDC
Floating Charge Voltage		13.5 VDC
Overcharge Protection		15.5 VDC
SOLAR CHARGER & AC CHARGER		
Maximum PV Array Open Circuit Voltage		50 VDC
Standby Power Consumption		1W
Maximum Solar Charge Current		50A
Maximum AC Charge Current		20A
Maximum Charge Current		50A
PHYSICAL		
Dimension, D x W x H (mm)	100 x 240 x 318	
Net Weight (kgs)	5.0	
OPERATING ENVIRONMENT		
Humidity	5% to 95% Relative Humidity(Non-condensing)	
Operating Temperature	0°C to 55°C	
Storage Temperature	-15°C to 60°C	

STANDARD: safety: IEC60950-1-1/IEC62040-1-1/ AS 62040-1-1, EMC: IEC62040-2 / AS62040-2/EN50091-2 CLASS, Design and test: IEC62040-3 / AS 62040-3

Note: Product specifications are subject to change without further notice.

