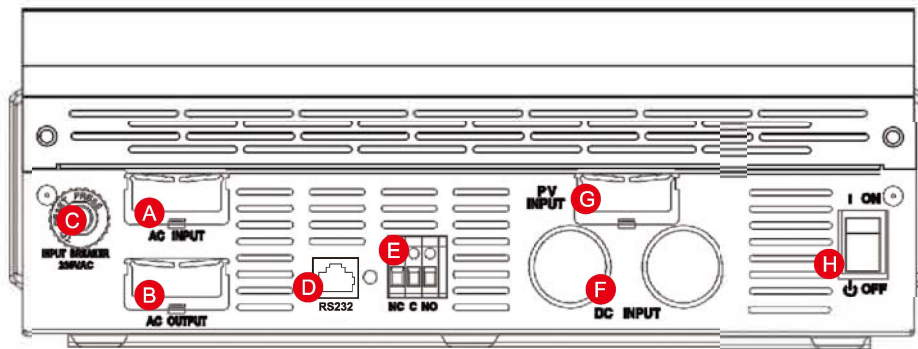
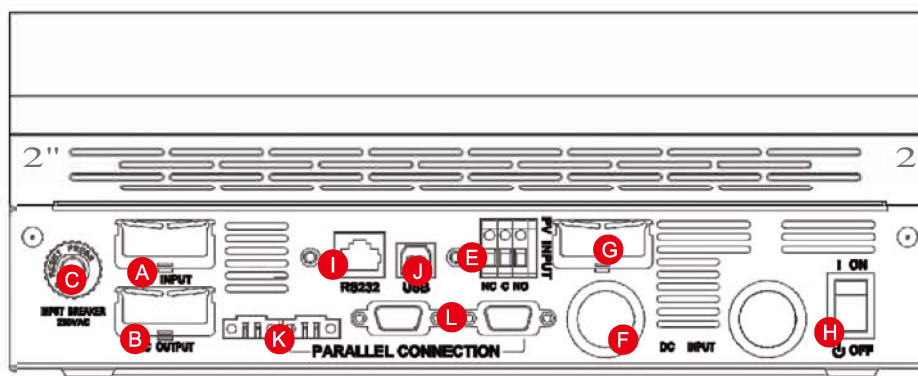


: i bWjcb'8 YgWjdljcb.'



USPP3118C 2-3KVA



USPP3118C Á ĩ SXOÁ

2" _____

B _____

C _____

I _____

g" _____

I " _____

g" _____

6F _____

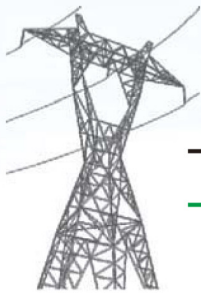
"Á _____

: " _____

Q _____

CI _____

Parallel operation with up to 6 units only available for 4KVA/5KVA



Input

Input

Input

AC Load

Built-in MPPT

Wall Mounted



