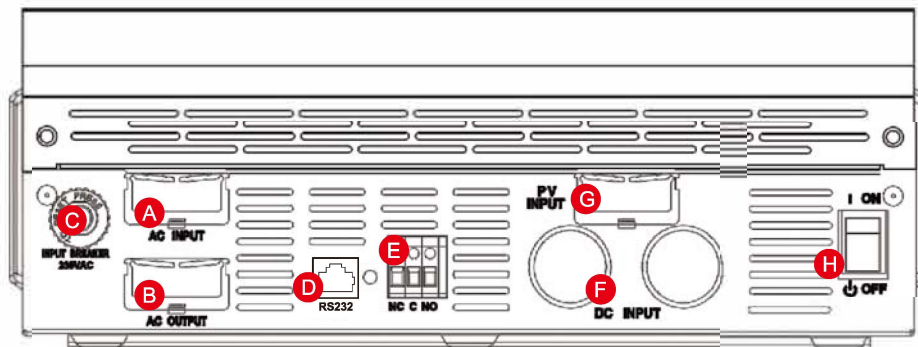
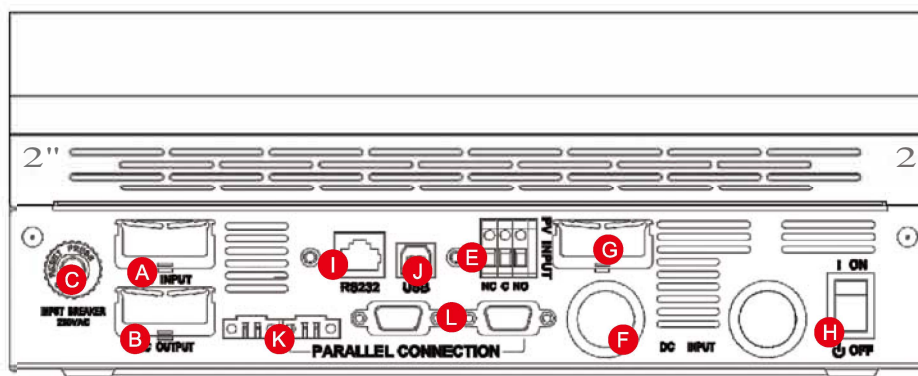


: i bWjcb'8 YgWjdljcb.'



USPP3118C 2-3KVA



USPP3118C Á ĩ SXOÁ

2" _____

B _____

C _____

I _____

g" _____

I " _____

g" _____

6F _____

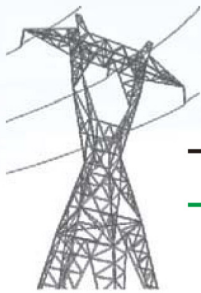
"Á _____

: " _____

Q _____

CI _____

Parallel operation with up to 6 units only available for 4KVA/5KVA



Input

Input

Input

AC Load

Built-in MPPT

Wall Mounted



USPP' %/ 7 2'

K U' Aci bHY' bHY[fUYX' Gc'Uf' Dck Yf' b j YfHY' hW b]WU' gdYVZVWUjcb'
6 i]H]b' ADDH' Gc'Uf' Vb bfc''Yf'

MODEL	USPP3118C2
Rated Power	2KVA/1600W

BDI H	
J c'U[Y'	& \$J 57'
GYVWU'Y' J c'U[Y' F Ub[Y'	%\$!& \$' J 57' fl cf DYfgcbU' 7 ca di HYfgt' - \$!& \$' J 57' fl cf < ca Y' 5dd']UbWgt'
: fYei YbVWf Ub[Y')\$ <n# \$' <n'
CI HDI H	
57' J c'U[Y' F Y[i 'U]cb' f6UHI' A cXYE'	& \$J 57 -)i'
Gi f[Y' Dck Yf'	(\$ \$J 5'
9ZVWVbVWfDYU_ E'	- ' i'
HfUbgZfH]a Y'	%\$ a g' fl cf DYfgcbU' 7 ca di HYfgt' &\$ a g' fl cf < ca Y' 5dd']UbWgt'
K Uj YZ:fa'	Di fY' g]bY k Uj Y'
65H9FM	
6UHYfmJ c'U[Y'	&(J 87'
: 'cU]b[' 7 \Uf[Y' J c'U[Y'	&+J 87'
Cj YfVUf[Y' DfcYV]cb'	'% J 87'
GC @ F' 7 < 5F; 9F / 57' 7 < 5F; 9F'	
A U]a i a 'DJ' 5ffUmDck Yf'	% \$ \$K'
A DDH' F Ub[Y' 4 'CdYfU]b[' J c'U[Y'	' \$! % \$ J 87'
A U]a i a 'DJ' 5ffUmCdYb' 7]W]hJ c'U[Y'	%() J 87'
A U]a i a 'Gc'Uf' 7 \Uf[Y' 7 i ffYbh	* \$5'
A U]a i a '57' 7 \Uf[Y' 7 i ffYbh	&\$ # \$5'
A U]a i a '7 \Uf[Y' 7 i ffYbh	* \$5'
A U]a i a '9ZVWVbVWf	- , i'
GHUbXVmDck Yf' 7 cbgi a dh]cb'	&K'
D< MG 7 5 @	
8]a Ybg]cbz 81' K' 1' < fa a E'	&-) L' % \$ L' ((\$'
BVhK Y[\h fl] gE'	%)'
CD9F5HB; '9BJFCBA9BH'	
< i a]X]m) i' 'tc' -) i' 'F YU]j Y' < i a]X]miBcb!VzbXYbg]b[E'
CdYfU]b['HYa dYfUhi fY'	\$ \$ 7 tc')) \$ 7'
GhcfU[Y' HYa dYfUhi fY'	! % \$ 7 tc' * \$ 7'

GH5B85F 8. : gUZ]m: 97 * \$ -) \$! % # 97 * & \$ (\$! % # 5G * * & \$ (\$! % # 9A 7 / 97 * & \$ (\$! # 5G * & \$ (\$! # 9B) \$ \$ - % 8' 7 @ 5G * 8 Yg] [b' UbX'
fYgh-97 * & \$ (\$! ' # 5G * * & \$ (\$! ' '
BcY.DfcXi V]gdYV]WUjcbg' UfY' gi VYV]h'c' V]Ub[Y' k]h'ci hZ f]h'Yf' bch]W'''

